



RETREAD & SECTION REPAIR TOOLS & ACCESSORIES



Cushion Gums & Rope Rubbers



Vulcanizing Chemicals & Accessories



Cutting & Grinding Tools



Retread Inspection, Building & Finishing Supplies



Envelopes & Accessories



Retread Blades & Accessories



Vulcanizing Equipment

Tire and Wheel Service Solutions

Prema Canada is one of the largest distributors of tire and wheel service supplies and is a market leader in delivering a total supply solution to the tire industry in Canada. Founded in 1954 as Loomis Root Canada Ltd, the company has evolved from a small, regional automotive and retread supply distributor into a focused network of independent tire and wheel service supply Distributors servicing the entire country from coast to coast.

Wherever You Are Coast to Coast



ALBERTA 8

- Northern 2
- Edmonton 2
- Central 2
- Calgary 1
- Southern Alberta 1

ONTARIO 17

- North Western 1
- North Eastern 1
- South Western 3
- Central 8
- Eastern 4

QUEBEC 6

- Northern 1
- Gatineau 1
- Montreal 1
- Southshore 1
- Quebec City 2

SASKATCHEWAN 4

- Northern 2
- Southern 2

BRITISH COLUMBIA 11

- Northern 3
- Vancouver Island 2
- Lower Mainland 2
- Interior 4

ATLANTIC CANADA 5

- New Brunswick 1
- Nova Scotia and PEI 2
- Newfoundland 2

MANITOBA 4

- West 1
- East 3

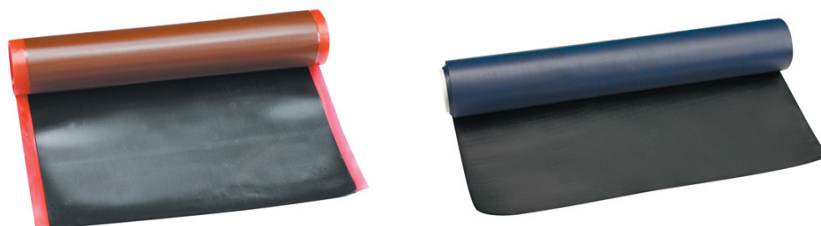
TABLE OF CONTENTS

	<i>Page</i>
8530 — Cushion Gums and Rope Rubbers	85-2
8540 — Vulcanizing Chemicals and Accessories	85-5
8550 — Cutting & Grinding Tools	85-6
8560 — Retread Inspection, Building, and Finishing Supplies	85-17
8570 — Envelopes and Accessories	85-19
8580 — Retread Blades & Accessories	85-21
8590 — Vulcanizing Equipment	85-22

PREMA

**Tire and Wheel
Service Solutions**

8530-10 — Cushion Gum



Code	Description	Size — Inches W & Thickness	Size — mm W & Thickness	Cure Rate	Shelf Life From Date of Manufacture	Qty
1518116UG	Universal Gum	18" x 1/16"	455 mm x 1.50 mm	RTT-35	1 Year	10 Lbs
1518132CG	Cushion Gum	18" x 1/32"	455 mm x 0.80 mm	RTT-35	1 Year	10 Lbs
1518164CG	Cushion Gum	18" x 1/64"	455 mm x 0.40 mm	RTT-35	1 Year	10 Lbs
151818CG	Cushion Gum	18" x 1/8"	455 mm x 3.00 mm	RTT-35	1 Year	10 Lbs
151818FG	Floater Gum	18" x 1/8"	455 mm x 3.00 mm	RTT-35	1 Year	10 Lbs
151818UG	Universal Gum	18" x 1/8"	455 mm x 3.00 mm	RTT-35	1 Year	10 Lbs
152116S	Stripping Stock	2" x 1/16"	50 mm x 1.50 mm	RTT-35	1 Year	25 Lbs
15618CG	Cushion Gum	6" x 1/8"	150 mm x 3.00 mm	RTT-35	1 Year	25 Lbs

REMA TIP TOP MULTIPLE TEMPERATURE RUBBER



Code	Description	Size L x W x Thickness	Qty
5561	MTR Cushion Gum • Uncured Compound for Use in Filling the Skive on Section Repairs to Truck, Farm, Industrial and OTR Tires — Both Radial and Bias Construction • Recommended for "Floating" Rema Repair Units in Hot Vulcanization Systems • Intended to be Used Only in Hot Vulcanization Systems With a Minimum Operating Temperature of 212° F (100° C) • Should Be Applied With Rema MTR Cement • 1 Year Shelf Life From Date of Manufacture	24' x 10" x .050 mm	6 Lbs
5563	MTR Cushion Gum • Uncured Compound for Use in Filling the Skive on Section Repairs to Truck, Farm, Industrial and OTR Tires — Both Radial and Bias Construction • Recommended for "Floating" Rema Repair Units in Hot Vulcanization Systems • Intended to be Used Only in Hot Vulcanization Systems With a Minimum Operating Temperature of 212° F (100° C) • Should Be Applied With Rema MTR Cement • 1 Year Shelf Life From Date of Manufacture	2600 mm x 30 mm x 3.0 mm	2 Lbs

REMA TIP TOP EM THERMO RUBBER BARS

Code	Description
5161190	EM Thermo Rubber Bars • Cut Resistant • Use With EMTP-II Thermo Press

8530-15 — Chemical Cushion Gum



Code	Description	Size	Qty
5570	Blue Floater Gum • SV BLUE GUM is for the Chemical Laminating "Floating" of Rema Reinforced Repair Units — Primarily In OTR Tires • Uses the Rema Blue Bonding System to Assure Optimum Bond Between the Tire and Repair Unit • Compounded for Use in Chemical (Cold) or Hot Vulcanization Systems • 2 Year Shelf Life From Date of Manufacture	1/32" x 20"	11 Lbs
5571	Blue Floater Gum • SV BLUE GUM is for the Chemical Laminating "Floating" of Rema Reinforced Repair Units — Primarily In OTR Tires • Uses the Rema Blue Bonding System to Assure Optimum Bond Between the Tire and Repair Unit • Compounded for Use in Chemical (Cold) or Hot Vulcanization Systems • 2 Year Shelf Life From Date of Manufacture	1/32" x 7"	4.5 Lbs

8530-20 — Rope Rubber

Code	Description	Diameter	Cure Rate	Shelf Life From Date of Manufacture	Box Weight (Est.)
18-ER	Extruder Rope • Made in the USA	3/8"	RTT-10	4 Months	30 Lbs
18-OTR-RR	OTR Rope Rubber • Made in the USA	3/8"	RTT-10	6 Months	30 Lbs
18-TRR	Thread Rope • Made in the USA	3/8"	RTT-10	6 Months	30 Lbs



OTR RETREAD ROPE

REMA TIP TOP MULTIPLE TEMPERATURE ROPE RUBBER

Code	Description	Qty
5160970	MTR / RCF Rope Rubber • Designed to Extrude Into the Skive Area Without Any Application of Cement / Solution • Provides an Immediate Optimum Bond to the Rubber of the Tire Note: Do Not Mix Rema Tip Top MTR / RCF Rope Rubber With Other Brands of Rope Rubber	12 Kg
5161180	Multiple Temperature Rubber (MTR) Cut Resistant Rope Rubber • OTR Repairs	26.5 Lbs
5567-26.5	Multiple Temperature Rubber (MTR) Rope Rubber • Required Vulcanizing Temperature — At Least 100°C (212°F) • Maximum Temperature for Warming Up MTR Rubber 80°C (176°F) • Use Only With MTR Solution	26.5 Lbs



5161180

8530-40 — Repair Cord



Code	Description	Size — Inches W & Thickness	Size — mm W & Thickness	Cure Rate	Shelf Life From Date of Manufacture	Box Weight Est.
15NY29364	Nylon Tire Cord	29" x 3/64"	735 mm x 0.40 mm	RTT-50	1 Year	20 Lbs

CURE RATES

RTT-A	RTT-B	RTT-C	RTT-D
10' @ 280F	20' @ 280F	20' @ 280F	30' @ 280F
20' @ 260F	35' @ 260F	40' @ 260F	50' @ 260F



8530-50 — Self Curing Rubber Systems

Rema Tip Top Vulcanizing Compounds Are Uniquely Designed for Cosmetic Repair to Tire and Conveyor-Belt Surfaces • Not for Use Where Cord Damage Exists • When Thoroughly Mixed in Equal Portions, These Materials Chemically Cure (at Room Temperature) Producing a Durable, Permanent Repair • Vulcanizing Compounds Are Limited to Bead Repair of Truck / OTR Tires or Sidewall Repair of OTR Tires Only • CFC-Free Formula Requires Shorter Drying Times

A & B COMPOUND REPAIR SYSTEMS

Rema Tip Top's Vulcanizing Compound Has No Equal When It Comes to Cold Vulcanization Injury Filling • Equal Quantities of A Compound and B Compound, Thoroughly Mixed, Produce a Durable Permanent Repair

Prema A & B Vulcanizing Compound is a 2 Part Rubber Compound That Cures at Room Temperature • When Used as an Injury Filler in Conjunction With a Prema Reinforced Repair Unit (Radial or Bias) It Produces a Permanent and Durable Repair • It is Also Extremely Useful for Repair of Minor Appearance Blemishes Around the Bead Area of the Tire • Install With Prema Ultra Fast Dry Vulcanizing Cement



50F



51F



PAB-F

Code	Description	Qty
50F		4 Lbs
51F	A & B Compound Set • CFC Free Version • Use in Conjunction With Rema BL-8 Special Blue Cement Under Cold Vulcanizing Process	2 Lbs
PAB-F		2 Lbs

T2 COMPOUND REPAIR SYSTEMS

Rema Tip Top's T-2 Compound is Abrasion Resistant While Maintaining Its' Elasticity and Has Been Developed to Help Save Time and Money When Repairing Rubber Only Damage to the Sidewall and Bead Areas of OTR Tires • Always Prepare Repair Area With T-2 Solution



5177300



5177310



5177323



5177330



5177402



5179008



5179015

Code	Description	Qty
5177300	T2 Compound A Extruder Rope	6 Kg
5177310	T2 Compound B Extruder Rope	6 Kg
5177323	T2 Compound A	2 Kg
5177330	T2 Compound B	2 Kg
5177402	T2 Cleaning Rubber	1 Kg
5179008	T-2A Solution A • CFC Free	700 g
5179015	T-2B Solution B • CFC Free	700 g

8540-10 — Cements

Code	Description	Qty
5159430	OTR Special Cement for Coating the Buffed Tire Inside in Conjunction With Rema Tip Top RAD and PN OTR Repair Patches • Especially Suitable for Repairs to Large Tires Used on Long-Haul EM Vehicles	650 g
16-RBB1G	Remabond Brush Cement • Heat Curing Repair Cement for Buzz Outs, Cushion Gums, Repair Cords and Heat Curing Repair Units (Uncured, Heat Cure, and Clothback Repair Units)	1 Gal
16-RBB5G	Remabond Brush Cement • Flammable • Higher Viscosity Formulation • to be Used in the Application of Fill Rubber for Buzz-Outs, Repair Patch Installation, and Tire Retreading Operations • Formulated for Heat and Pressure Type Cures (Do Not Use for Room Temperature Cure Conditions)	5 Gal
16-RBS5G	Remabond Spray Cement • Lower Viscosity Formulation • To Be Used in the Application of Fill Rubber for Buzz-Outs, Repair Patch Installation, and Tire Retreading Operations • Formulated for Heat and Pressure Type Cures (Do Not Use for Room Temperature Cure Conditions)	5 Gal
MTR-F	Specifically Designed for Heat Cure Repair Processes Utilizing Rema Tip Top Repair Units and Uncured MTR Rubber Products	700 g



16-RBB5G



MTR-F

8540-20 — Cans & Brushes

Code	Description
968	32 oz Aluminum Cement Dispenser With Wooden Handled Brush • Ideal as Working Reservoir When Purchasing Vulcanizing Fluid in Bulk Quantities
12SB	Stipple Brush • 1-1/2"
968B	Replacement Brush and Lid for 968 Aluminum Cement Dispenser
K-533	Quart Plastic Can With Brush for Vulcanizing Fluids and Bead Sealers
K-534	Plastic Handled Replacement Brush and Lid for K-533
K-535	8 oz Aluminum Can With Screw-On Brush / Cap • 1-3/4" Opening for Vulcanizing Fluids • The Seam of the Can is Sulpherless Solder Therefore Vulcanizing Fluids Will Not Be Set Up
K-632	32 oz Aluminum Can With Screw-On Brush / Cap • 1-3/4" Opening for Vulcanizing Fluids • The Seam of the Can is Sulpherless Solder Therefore Vulcanizing Fluids Will Not Be Set Up



968



12SB



968B



K-533



KK-534



K-535

8550-10 — Air Buffers — Heavy Duty



Code	Description
UG-1250-72M	7200 RPM • Governor Controlled Motor • Roll Type Throttle Controls • Wide Range of Speeds • Muffled Exhaust • Requires 90 PSI Operating Pressure • Spindle Shortened and Machined Down for Ease of Use in Field
UG-1250L-72M	7200 RPM • Governor Controlled Motor • Lever Type Throttle Controls • Wide Range of Speeds • Muffled Exhaust • Requires 90 PSI Operating Pressure • Spindle Shortened and Machined Down for Ease of Use in Field
UG-65EB	14600 RPM • Non-Governed • Sleeve Type Throttle Controls • Wide Range of Speeds • Requires 85 PSI Operating Pressure
UG-65EBL	14600 RPM • Non-Governed • Lever Type Throttle Controls • Wide Range of Speeds • Requires 85 PSI Operating Pressure

8550-12 — Flex Shaft Buffers, Accessories & Parts *cont'd on next page*



BUFFERS

Code	Description
49-2	Wyco Flex Shaft Buffer • 1/3 HP • 1725 RPM
49-3	Wyco Flex Shaft Buffer • 1/2 HP • 3450 RPM
49-4	Wyco Flex Shaft Buffer • 1/2 HP • 1800 RPM
49-5	Wyco Flex Shaft Buffer • 3/4 HP • 3450 RPM

ACCESSORIES & PARTS *cont'd on next page*

Code	Description
305-R	Wheel Arbors for Rotary Rasps • Internal 9/16-18 Female Thread to Fit All Wyco Handpieces • Male Threaded 3/8-16 to Fit Rasps
405	Wheel Arbors for Grinding Wheels and Wire Brushes • Internal 9/16-18 Female Thread to Fit All Wyco Handpieces • External Male Thread 1/2-20 • Wheel Width 1"
551	Quick Change Handpiece for Wyco 49-5, 49-6 and 49-14 Flexible Shaft Buffing Machines
3500	Quick Change Handpiece for Wyco 49-2, 49-3 and 49-4 Flexible Shaft Buffing Machines
3400-1/2	1/2" Motor Coupling for Wyco 49-2, 49-3 and 49-4 Flexible Shaft Buffing Machines
3400-5/8	5/8" Motor Coupling for Wyco 49-2, 49-3 and 49-4 Flexible Shaft Buffing Machines
550MP-3/4	3/4" Motor Coupling for Wyco 49-5, 49-6 and 49-14 Flexible Shaft Buffing Machines
550MP-5/8	5/8" Motor Coupling for Wyco 49-5, 49-6 and 49-14 Flexible Shaft Buffing Machines
49-084-074	Wyco 49 Series — Quadpod Assembly • Complete Base Assembly Includes From the Wyco 49 Series Schematic (1) #11 (573-852), (1) #12 (083-094), (1) #13 (853-314), (1) #14 (644-074) and (4) #15 (894-722)
551-091400	1/4" Steel Ball for 551 Handpiece • To Complete (1) 551 Handpiece, 4 Steel Balls Are Required
551-765322	Sleeve for 551 Handpiece
655-143	Wyco Flex Shaft Grease • 14 oz

8550-12 — Flex Shaft Buffers, Accessories & Parts *cont'd from previous page*

ACCESSORIES & PARTS *cont'd from previous page*

Code	Description
C-2	6' Internal Core (C-2) • For Use on Wyco 49-3 or 49-4 Flexible Shaft Buffing Machines • Male Drive End
C-10	5' Internal Core (C-10) • For Use on Wyco 49-2 Flexible Shaft Buffing Machines • Male Drive End
C-30	7' Internal Core (C-30) • For Use on Wyco 49-5 or 49-6 Flexible Shaft Buffing Machines • Female Drive End
K-2	6' External Casing (K-2) • For Use on Wyco 49-3 or 49-4 Flexible Shaft Buffing Machines
K-10	5' External Casing (K-10) • For Use on Wyco 49-2 Flexible Shaft Buffing Machines
K-30	7' Internal Core (K-30) • For Use on Wyco 49-5 or 49-6 Flexible Shaft Buffing Machines



C-2



K-2

8550-15 — Adaptors For Grinders & Buffers

Code	Description
S1046D	Dual Head Arbor • Adaptor is Used With a Radial Skive Brush to Allow Tire Technicians to Quickly Flip / Turn the Radial Skive Brush, Thereby Changing the Brush Direction of Rotation as the Wires Begin to Bend • Prolongs Brush Life
S1047	Long Quick Change Adaptor • 3/8" - 24 Thread Bore • 1 Flat Washer and 1 Nut Included • Thread Length 1"
S1047XL	Quick Change Extra Long Adaptor • For Rasps, Buffing Wheels and Brushes Where Extra Length is Required • 3/8" - 24 Thread Bore • 1 Flat Washer and 2 Nuts Included • Thread Length 1-3/4"
S1048	Short Drill Chuck Adaptor • 3/8" - 24 Thread Bore • Overall Length 1-1/2" • For Use With S1010K Drill Chuck
S1049	Long Drill Chuck Adaptor • 3/8" - 24 Thread Bore • Overall Length 2-3/4" • Includes 2 Nuts • For Use With S1010K Drill Chuck
SLP-9201	3/8 - 24 Chuck Adaptor 1-11/16" • Black Hardened
SLP-9202	3/8 - 24 Chuck Adaptor 2-3/4" • Black Hardened
SLP-9211	3/8 - 24 Quick Change Adaptor 1-7/8" • Black Hardened
SLP-9212	3/8 - 24 Quick Change Adaptor 2-1/4" • Black Hardened



S1046D



S1047



S1047XL



S1048



S1049



SLP-9201



SLP-9202



SLP-9211



SLP-9212

8550-20 — Gougers



11-604



11-606



11-626



11-635

<i>Code</i>	<i>Description</i>
11-603	Rotary Gouger • 1-1/4" x 3/8" Thread Arbor Hole • No Notch
11-604	Mini Gouger • 1-1/4" x 3/8" Thread Arbor Hole • No Notch
11-605	Heavy Duty Rotary Gouger • 2" x 1/2" Arbor Hole • No Notch
11-606	Heavy Duty Rotary Gouger • 2" x 1/2" Arbor Hole • With Notch
11-607	Micro Gouger • 3/4" x 3/8" x 24 Thread Arbor Hole • No Notch
11-610	Thin Wall Rotary Gouger • 2" x 3/8" Arbor Hole • No Notch
11-612	Thin Wall Rotary Gouger • 2" x 3/8" Arbor Hole • With Notch
11-626	Sharpener for 3/4" - 1-1/4" Rotary Gougers
11-635	Small Replacement Stone for 1-1/4" and 2" Sharpeners
11-636	Large Replacement Stone for 3/4" and 1-1/4" Sharpeners

8550-22 — Tack Rasps



TBYD03



TBYH11



TBYOX3R

<i>Code</i>	<i>Description</i>
TBYD03	Convex 7" Tac-A-Disc • 7/8" Arbor Hole
TBYH11	OX3R Hub With Insert • 1-1/2" Diameter x 5/8" Width • Come With a 3/8" Arbor Hole
TBYH12	OX2R Hub With Insert • 2-1/2" Diameter x 1" Width • Comes With a 3/8" Arbor Hole
TBYOX2R	Tack Rasp • 2-1/2" Diameter x 1" Width
TBYOX3R	Tack Rasp 1-1/2" Diameter x 5/8" Width

8550-24 — Squiggly Grinding Wheels



<i>Code</i>	<i>Description</i>
20-103	2" Squiggly Rasp • 3/8" Arbor Hole • Fast Rubber Removal • No Scorching • Easy Control • Long Life • No Regritting Cost • 10 Blades With Support Plate
20-104	2" Squiggly Rasp • 3/8" Arbor Hole • Fast Rubber Removal • No Scorching • Easy Control • Long Life • No Regritting Cost • 24 Blades With Support Plate

8550-31 — Tungsten Rubber Grinding Wheels

Tungsten Carbide Buzz-out Wheel • Air-Cooled Design Permits Faster, Cooler and Cleaner Buffing • Helps Eliminate Burning and Glazing of Rubber • 5000 RPM Maximum

Code	Description	Size	Grit
21-101-36	Disposable Wheel Rasp • Economy	2" x 1/4"	36
21-105-36	Disposable Wheel Rasp • Economy	2" x 1/2"	36
21-106-16	Disposable Wheel Rasp • Economy	2" x 3/4"	16
21-107-36	Disposable Wheel Rasp • Economy	2" x 3/4"	36
332056-16	Copper Wheel Rasp	2" x 3/16"	16
332056-36	Copper Wheel Rasp	2" x 3/16"	36
332058-16	Copper Wheel Rasp	2" x 1/4"	16
332063-16	Copper Wheel Rasp	2" x 3/8"	16
332064-16	Copper Wheel Rasp	2" x 1/2"	16
TA-2203M-36	Mini Wheel Rasp	1-1/2" x 1/8"	36
TA-2204M-16	Mini Wheel Rasp	1-1/2" x 1/8"	16
TA-2205M-36	Mini Wheel Rasp	1-1/2" x 3/16"	36
TA-2207M-36	Mini Wheel Rasp	1-1/2" x 1/2"	36
TA-P208-16	Piranha Wheel Rasp	2" x 1/2"	16
TA-2203-36	Wheel Rasp	2" x 3/16"	36
TA-2204-16	Wheel Rasp	2" x 3/16"	16
TA-2205-36	Wheel Rasp	2" x 1/4"	36
TA-2206-16	Wheel Rasp	2" x 1/4"	16
TA-2207-36	Wheel Rasp	2" x 1/2"	36
TA-2208-16	Wheel Rasp	2" x 1/2"	16
TA-2209-36	Wheel Rasp	2" x 3/4"	36
TA-2210-16	Wheel Rasp	2" x 3/4"	16
TA-T350-16	Wheel Rasp • 1/2" Arbor Hole	3" x 1/2"	16
TA-T418-16	Wheel Rasp	4" x 1/8"	16
TA-T418-36	Wheel Rasp	4" x 1/8"	36
TA-T438-16	Wheel Rasp • 1/2" Arbor Hole	4" x 1/2"	16
TA-T450-16	Wheel Rasp • 1/2" Arbor Hole	4" x 1/2"	16
TA-T475-16	Wheel Rasp • 1/2" Arbor Hole	4" x 3/4"	16
TA-T650-16	Wheel Rasp • 1/2" Arbor Hole	6" x 1/2"	16
TFW-310-60	Flat Wheel Rasp	3" x 1"	60
TFW-415-16	Flat Wheel Rasp	4" x 1/2"	16
TFW-415-60	Flat Wheel Rasp	4" x 1/2"	60
TFW-610-36	Flat Wheel Rasp	6" x 1"	36
TFW-615-16	Flat Wheel Rasp	6" x 1/2"	16



21-105-36



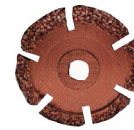
332064-16



TA-2207M-36



TA-P208-16



TA-2206-16



TA-2208-16



TA-2209-36



TA-T438-16

8550-32 — Tungsten Rubber Grinding Cups

Tungsten Carbide Contour Cup • Air-Cooled Design Permits Faster, Cooler and Cleaner Buffing • Helps Eliminate Burning and Glazing of Rubber • 5000 RPM Maximum



21-108-16



332009-36



TCW-210-16



TCW-315-36



TCW-815-16

Code	Description	Size	Grit
21-108-16	Disposable Cup Rasp	2"	16
21-109-36	Disposable Cup Rasp	2"	36
21-110-60	Disposable Cup Rasp	2"	60
332009-16	Copper Cup Rasp • 3/8" Arbor Hole	3" x 1-1/2"	16
332009-36	Copper Cup Rasp • 3/8" Arbor Hole	3" x 1-1/2"	36
332009-60	Copper Cup Rasp • 3/8" Arbor Hole	3" x 1-1/2"	60
TCW-210-16	Cup Rasp	2" x 1"	16
TCW-210-36	Cup Rasp	2" x 1"	36
TCW-210-40	Cup Rasp	2" x 1"	40
TCW-210-60	Cup Rasp	2" x 1"	60
TCW-310-16	Cup Rasp	3" x 1"	16
TCW-310-36	Cup Rasp	3" x 1"	36
TCW-315-16	Cup Rasp	3" x 1-1/2"	16
TCW-315-36	Cup Rasp	3" x 1-1/2"	36
TCW-315-60	Cup Rasp	3" x 1-1/2"	60
TCW-415-16	Cup Rasp	4" x 1-1/2"	16
TCW-415-36	Cup Rasp	4" x 1-1/2"	36
TCW-415-60	Cup Rasp	4" x 1-1/2"	60
TCW-515-16	Cup Rasp	5" x 1-1/2"	16
TCW-515-36	Cup Rasp • 3/4" Arbor Hole	5" x 1-1/2"	36
TCW-615-16	Cup Rasp	6" x 1-1/2"	16
TCW-615-36	Cup Rasp	6" x 1-1/2"	36
TCW-815-16	Cup Rasp	8" x 1-1/2"	16

8550-33 — Tungsten Rubber Grinding Donuts

Tungsten Donut Wheel • Air-Cooled Design Permits Faster, Cooler and Cleaner Buffing • Helps Eliminate Burning and Glazing of Rubber • 5000 RPM Maximum



132032-16



TDW-510-16

Code	Description	Size	Grit
132032-16	Copper Donut Wheel • 3/8" Arbor Hole	4" x 3/4"	16
132032-36	Copper Donut Wheel • 3/8" Arbor Hole	4" x 3/4"	36
TDW-310-16	Donut Wheel Rasp	3" x 1"	16
TDW-410-16	Donut Wheel Rasp	4" x 1"	16
TDW-410-36	Donut Wheel Rasp	4" x 1"	36
TDW-410-60	Donut Wheel Rasp	4" x 1"	60
TDW-510-16	Donut Wheel Rasp	5" x 1"	16
TDW-510-36	Donut Wheel Rasp	5" x 1"	36
TDW-515-24	Donut Wheel Rasp • 7/8" Arbor Hole	5" x 1-1/2"	24
TDW-610-16	Donut Wheel Rasp • 7/8" Arbor Hole	5" x 1"	16
TDW-610-36	Donut Wheel Rasp • 7/8" Arbor Hole	6" x 1"	36

8550-34 — Tungsten Rubber Grinding Discs

Tungsten Disc Wheel • Air-Cooled Design Permits Faster, Cooler and Cleaner Buffing • Helps Eliminate Burning and Glazing of Rubber • 5000 RPM Maximum

Code	Description	Size	Grit
DSK-458-24	Vented Angled Disc Wheel • 5/8" Arbor Hole	4" x 3/4"	24
DSK-738-16	Vented Angled Disc Wheel • 3/8" Arbor Hole	6-3/4" x 3/8"	16
DSK-738-24	Vented Angled Disc Wheel • 3/8" Arbor Hole	6-3/4" x 3/8"	24



DSK-458-24

8550-35 — Tungsten Rubber Grinding Cones

Tungsten Cone Rasp • Air-Cooled Design Permits Faster, Cooler and Cleaner Buffing • Helps Eliminate Burning and Glazing of Rubber • 5000 RPM Maximum

Code	Description	Size	Grit
TA-2611-36	Cone Rasp	2" x 1"	36
TA-2612-16	Cone Rasp	2" x 1"	16
TA-2613-36	Cone Rasp	4" x 3/4"	36
TA-2614-16	Cone Rasp	4" x 3/4"	16



TA-2612-16

8550-36 — Tungsten Rubber Grinding Pencils

Tungsten Pencil Rasp • Air-Cooled Design Permits Faster, Cooler and Cleaner Buffing • Helps Eliminate Burning and Glazing of Rubber • 5000 RPM Maximum

Code	Description	Size	Grit
TA-2502-16	Pencil Rasp	2-1/2" x 1/8"	16
TA-2505-36	Pencil Rasp	2-1/2" x 1/4"	36
TA-2506-16	Pencil Rasp	2-1/2" x 1/4"	16
TA-2507-36	Pencil Rasp	2-1/2" x 1/4"	36
TA-2508-16	Pencil Rasp	2-1/2" x 1/4"	16



TA-2508-16

8550-37 — Tungsten Rubber Grinding Balls

Tungsten Ball Rasp • Air-Cooled Design Permits Faster, Cooler and Cleaner Buffing • Helps Eliminate Burning and Glazing of Rubber • 5000 RPM Maximum

Code	Description	Size	Grit
TA-2100-16	Ball Rasp • 1/4" Shaft	5/8"	16
TA-2200-16	Ball Rasp • 1/4" Shaft	7/8"	16
TA-2200-36	Ball Rasp • 1/4" Shaft	7/8"	36



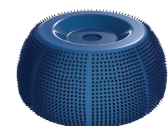
TA-2200-16

8550-40 — Contour Rubber Grinding Wheels [cont'd on next page](#)

RUBBERHOG EXTREME FLARED CONTOUR WHEELS — BLUE

Rubberhog Extreme Blue Flared Contour Wheels Are Fast-Working, Long-Lasting Tire Repair Buffing Tools Typically Used For Installing Repairs, Where A Moderately Rougher Texture Is Acceptable Or Desired (For Example, OTR Repairs) and Finishing Of Repairs On Sidewalls. MCM Teeth — Densely Molded Carbide, Uniform Height And Shape, Self-Cleaning

Code	Description
RH114X	3" Diameter • 3/8" Bore • Medium (MCM70)
RH120X	3-1/2" Diameter • 3/8" Bore • Medium (MCM70)



RH114X

RUBBERHOG EXTREME FLARED CONTOUR WHEELS — BLACK

Rubberhog Extreme Black Flared Contour Wheels Are Fast-Working, Long-Lasting Tire Repair Buffing Tools Typically Used For Repair Removal, Section Repair, Post-Rasp Texturing Of Low Spots Along Edge Of Crown (Skiving Station), And Clean-Up Of Sidewall Repairs (Final Inspection). MCM Teeth — Densely Molded Carbide, Uniform Height And Shape, Self-Cleaning

Code	Description
RH116X	3" Diameter • 3/8" Bore • Coarse (MCM90)
RH122X	3-1/2" Diameter • 3/8" Bore • Coarse (MCM90)



RH122X

8550-40 — Contour Rubber Grinding Wheels *cont'd from previous page*

REUSABLE POLYPLUGS FOR FLARED CONTOUR WHEELS



RH156

Code	Description	Diameter	Bore
RH150		1-3/4"	3/8"
RH151	Reusable Polyplugs for Flared Contour Wheels • Makes Wheels Run True, Protects Them From Damage and Provides Flywheel Effect for Better Control	2"	3/8"
RH152		2-1/2"	3/8"
RH154		3"	3/8"
RH156		3-1/2"	3/8"

BUFFING WHEELS



S1011



S2032

Code	Description	Diameter
S1011	BC-1 Wheel for Tube Repairs and Light Work • 5000 RPM Maximum	2-1/2"
S2032	No. 60 HB Nickel Chromium Buffing Wheel • Designed to Outlast Copper Colored Wheels • Use for Texturizing of Tubes and Innerliners • 3/8" Arbor Hole • 5000 RPM Maximum	2-1/2"

8550-41 — SSG Rubber Grinding Wheels



RH300



RH619

Code	Description	Size	Grit
432065-230	Steel Shot Grit Wheel Rasp	2" x 3/4"	230 SSG
932063-230	Steel Shot Grit Wheel Rasp • 3/8" Arbor Hole • 24 Thread	2" x 3/8"	230 SSG
RH300	Round Faced Buzz-Out Wheels for Skiving and Texturing of Large Section Repairs • 3/8" Arbor Hole • 24 Thread	2" x 1/4"	230 SSG
RH308	Buzz-Out Wheels for Skiving on High Tread Radial Tires • Excellent for Use on Bias Tires • Not Recommended for Contact With Steel Cord • Free Cutting and Long Lasting • 3/8" Arbor Hole • 24 Thread	2" x 1/2"	230 SSG
RH310		2" x 1/2"	390 SSG
RH619	Rotor Saw for Small Buzz-Out Repairs of Tread and Sidewall	1-3/8" x 1/4"	390 SSG

8550-42 — SSG Rubber Grinding Cups *cont'd on next page*



332001-16



332015-60



432000-170

Code	Description	Size	Grit
332001-16	Copper Contour Wheel • 3/8" Arbor Hole • 24 Thread	2" x 1"	16
332015-60	Flared Contour Wheel • 3/8" Arbor Hole	2-1/2" x 1"	60
432000-170	Steel Shot Grit Contour Wheel • 3/8" Arbor Hole • 24 Thread	1-3/4" x 3/4"	170 SSG
432001-170	Steel Shot Grit Contour Wheel • 3/8" Arbor Hole • 24 Thread	2" x 1"	170 SSG
432003-230	Steel Shot Grit Contour Wheel • 3/8" Arbor Hole	3" x 1-1/4"	230 SSG
432007-170	Steel Shot Grit Contour Wheel • 3/8" Arbor Hole	2-1/2" x 1"	170 SSG
432014-170	Steel Shot Grit Contour Wheel • 3/8" Arbor Hole	2" x 1"	170 SSG

8550-42 — SSG Rubber Grinding Cups *cont'd from previous page*

Code	Description	Size	Grit
432014-230	Steel Shot Grit Contour Wheel • 3/8" Arbor Hole	2" x 1"	230 SSG
432015-390	Steel Shot Grit Contour Wheel • 3/8" Arbor Hole	3-1/2" x 1-1/2"	390 SSG
RH100	Flared Contour Wheel • 3/8" Arbor Hole	1-3/4" x 3/4"	170 SSG
RH102	Flared Contour Wheel • 3/8" Arbor Hole	1-3/4" x 3/4"	230 SSG
RH107	Flared Contour Wheel • 3/8" Arbor Hole	2-1/2" x 1-1/16"	170 SSG
RH109	Flared Contour Wheel • 3/8" Arbor Hole	2 1/2" x 1-1/16"	230 SSG
RH111	Flared Contour Wheel • 3/8" Arbor Hole	2 1/2" x 1-1/16"	390 SSG
RH112	Flared Contour Wheel • 3/8" Arbor Hole	3" x 1-1/4"	170 SSG
RH114	Flared Contour Wheel • 3/8" Arbor Hole	3" x 1-1/4"	230 SSG
RH116	Flared Contour Wheel • 3/8" Arbor Hole	3" x 1-1/4"	390 SSG
RH118	Flared Contour Wheel • 3/8" Arbor Hole	3-1/2" x 1-1/2"	170 SSG
RH120	Flared Contour Wheel • 3/8" Arbor Hole	3-1/2" x 1-1/2"	230 SSG
RH122	Flared Contour Wheel • 3/8" Arbor Hole	3-1/2" x 1-1/2"	390 SSG
RH130	Mini Flared Contour Wheel • 3/8" Arbor Hole • 60 Grit	2" x 3/4"	60
RH140	Flared Contour Wheel	1-1/4" x 3/4"	170 SSG
RH130-170	Mini Flared Contour Wheel • 3/8" Arbor Hole	2" x 3/4"	170 SSG
RH130-230	Mini Flared Contour Wheel • 3/8" Arbor Hole	2" x 3/4"	230 SSG
RH106-S	Steel Shot Rubberhog 106 Simulation	2-1/2" x 1"	170 SSG
RH108-S	Steel Shot Rubberhog 108 Simulation	2-1/2" x 1"	230 SSG
RH110-S	Steel Shot Rubberhog 110 Simulation	2-1/2" x 1"	390 SSG
RH114-S	Steel Shot Rubberhog 114 Simulation	3" x 1-1/4"	230 SSG
RH116-S	Steel Shot Rubberhog 116 Simulation	3" x 1-1/4"	390 SSG
RH118-S	Steel Shot Rubberhog 118 Simulation	3-1/2" x 1-1/2"	170 SSG
RH120-S	Steel Shot Rubberhog 120 Simulation	3-1/2" x 1-1/2"	230 SSG
RH122-S	Steel Shot Rubberhog 122 Simulation	3-1/2" x 1-1/2"	390 SSG
RH122-S-460	Steel Shot Rubberhog 122 Simulation	3-1/2" x 1-1/2"	460 SSG



432015-390



RH100



RH130



RH106-S



RH122-S

8550-43 — SSG Rubber Grinding Donuts

Code	Description	Size	Grit
432063-230	Donut Wheel	2" x 3/8"	230 SSG
RH708	Donut Wheel for Retreading Sidewalls	6" x 1-1/2"	390 SSG



RH708

8550-44 — SSG Rubber Grinding Discs



100-GEG-200



432111-230



RH1160

Code	Description	Size	Grit
100-GEG-200	Rotary Knife Blade With 1/4" Notch for Keyway • Use With Bandag 5110 and All Matuzzi Treadbuilders	O.D. — 6" I.D. — 2"	150
100-GEG-20080		O.D. — 6" I.D. — 2"	80
432111-230	Steel Shot Grit Flat Disc • Popular for OTR Sidewall Buffing, Large Repairs, Conveyor Belt Repair, Pre-Cure Tread Preparation • 7/8" Arbor Hole	7" x 3/32"	230 SSG
RH1160	Sanding Disc • Designed for Angle Head Machines, Section Repair and Sidewall Cosmetics	7"	390 SSG

8550-46 — SSG Rubber Grinding Pencils



RH611



RH626

Code	Description	Size	Grit
932088-390	Pencil Rasp • Nail Hole Repair	3" x 1/4" x 3/8"	390 SSG
RH611	Taper for Small Section Repairs of Tread and Sidewall • Outlasts Ordinary Grit Several Times Over	5/8" x 1" 1/4" Shank	330 SSG
RH613	Taper for Small Section Repairs of Tread and Sidewall • Outlasts Ordinary Grit Several Times Over	7/8" x 1-1/4" 1/4" Shank	330 SSG
RH626	Nail Hole Reamer for Plug Repairs on Fabric Tires Only • Outlasts Ordinary Grit Several Times Over	1/4" x 3" 1/4" Shank	330 SSG

8550-47 — SSG Rubber Grinding Balls



932004-330

Code	Description	Size	Grit
932004-330	Ball Rasp • 1/4" Shaft	7/8"	330 SSG
932005-330	Ball Rasp • 1/4" Shaft	5/8"	330 SSG
RH601	Ball Rasp	5/8"	330 SSG
RH603	Ball Rasp	7/8"	330 SSG
RH605	Ball Rasp	1-1/8"	330 SSG

8550-48 — SSG Rubber Grinding Kits



Code	Description	Size	Grit
RH635	4 Piece Precision Tool Kit for Extremely Small Defect Repairs	Taper 1/8" x 7/8" Taper 1/4" x 5/8" Rotorsaw 3/4" x 1/8" Ball 3/8" All Have a 1/8" Shank	170 SSG

8550-50 — Skive Brushes

Code	Description
6055	2" Encapsulated Wire Brush • 5000 RPM Maximum
6056	6" Encapsulated Wire Brush • 5000 RPM Maximum
S896	1/2" Skive Brush to Remove Scorched Rubber in Skived Area • .005 Wire • 4000 RPM Maximum



6056



S896

8550-60 — Carbide Burrs

Code	Description
283	Mini Flat Tip Diamond Cut Burr for Cutting Steel • Use at 20,000 RPM or Higher for Best Results • 1-1/2" Length • 1/8" Shaft • Cut Across Single Cables in the Sidewall
284	Flat Tip Diamond Cut Burrs for Cutting Steel • Use at 20,000 RPM or Higher for Best Results • 2-1/2" Length • 1/4" Shaft • Work Out Skives in the Tread
2-280	Mini Pointed Diamond Cutter



283



2-280

8550-70 — Aluminum Oxide Stones *cont'd on next page*

Code	Description
S870	Mini-Pencil Aluminum Oxide Stone • Finest Compound Securely Mounted on a Steel Shaft • 7/16" Length • 1/8" Shaft • 20,000 to 30,000 RPM • Finish Single Cable Ends
S871	A-5 Large Conical Aluminum Oxide Stone
2-S871	Aluminum Oxide Conical Stone • General Purpose Stone Used for Cutting Cables Out of Steel Constructed Tires
S872	Pencil Aluminum Oxide Stone • Finest Compound Securely Mounted on a Steel Shaft • 1-1/16" Length • 1/4" Shaft • 20,000 to 47,000 RPMs • For Working in Tight Places
2-S872	Aluminum Oxide Pencil Stone • 1/4" x 1-1/16" • Great for Working in Tight Spaces When Cutting Cables Out of Steel Constructed Tires
2-S872B	Aluminum Oxide Pencil Stone • 1-1/16" • 1/4" Shaft • General Purpose Stone Used for Cutting Cables Out of Steel Constructed Tires • Brown Stone
2-S872S	Aluminum Oxide Pencil Stone • Slightly Less Than 1-1/16" • 1/4" Shaft • General Purpose Stone Used for Cutting Cables Out of Steel Constructed Tires • Brown Stone
S873	Mushroom Aluminum Oxide Stone • Finest Compound Securely Mounted on a Steel Shaft • 1-5/8" Diameter • 1/4" Shaft • 20,000 to 23,500 RPMs • General Purpose Stone.
2-S873	Aluminum Oxide Mushroom Stone • 1-5/8" • 1/4" Shaft • General Purpose Stone Used for Cutting Cables Out of Steel Constructed Tires
2-S873B	Aluminum Oxide Mushroom Stone • 1-5/8" • 1/4" Shaft • General Purpose Stone Used for Cutting Cables Out of Steel Constructed Tires • Brown Stone
S874	Mini-Mushroom Aluminum Oxide Stone • Finest Compound Securely Mounted on a Steel Shaft • 1/2" Diameter • 1/8" Shaft • 20,000 to 30,000 RPMs • Finish Cable Ends in Tight Places



S870



S871



2-S872



2-S873



2-S873B



S874

8550-70 — Aluminum Oxide Stones *cont'd from previous page*



2-S875



2-S879B

Code	Description
S875	Conical Aluminum Oxide Stone • Finest Compound Securely Mounted on a Steel Shaft • 1-1/8" Length • 3/4" Cone • 1/4" Shaft • 20,000 to 33,500 RPMs • Finish Cable Ends in the Tread
2-S875	Aluminum Oxide Cone Shaped Stone • 3/4" • General Purpose Stone Used for Cutting Cables Out of Steel Constructed Tires
S879	Mushroom Aluminum Oxide Stone • Finest Compound Securely Mounted on a Steel Shaft • 1-1/4" Diameter • 1/4" Shaft • 20,000 to 30,500 RPMs • Smaller General Purpose Stone
2-S879	Aluminum Oxide Mushroom Stone • 1-1/4" • 1/4" Shaft • General Purpose Stone Used for Cutting Cables Out of Steel Constructed Tires
2-S879B	Brown Aluminum Oxide Mushroom Stone • 1-1/4"

8550-80 — Knives & Scissors



940



941



942



6018



DM90010



K-24A



MH26470



RUSX10X1-1/4S

Code	Description
940	Taper Point Skive Knife
941	Extra Curve Skiver
942	Flexible Round Point Knife
6017	Skive Knife • Narrow • 5" Blade
6018	Skive Knife • Standard • 6" Blade
DEX-75310	Flexible Blade Skiving Knife K-1A 4-7/8"
DH73040	Mill Blade 9" x 5/8" x .072" Thick
DH73110	Mill Blade 6" x 5/8" x .072" Thick
DM90010	Leather Sheath 1-1/2" x 9" • No Clip • Pocket Size 1/34" x 5-1/2"
DM90050	Leather Sheath 2-1/2" x 9" • With Clip • Pocket Size 1/34" x 5-1/2"
K-24A	Bent Handle Industrial Shears • 12"
MH26000	Electric Knife Heater (UI)
MH26470	Electric Knife Heater 115V
MK41580	Mill / Trimmer Blade Slot Screw
MK42810	4" Square Point Heater Knife
MK42820	8" Square Point Heater Knife
RUSX10X1-1/4S	10" x 1-1/4" Skiver
SS10	10" Straight Handle Scissors
VV-1004502	Vulcan 105 Tread Builder 13" x 2-1/2" Knife • High Tempered Steel • 1/8" Thick



SS10

8560-10 — Paintsticks & Crayons

Code	Description	Colour	Qty
80222		Red	12 / Box
80224		Orange	12 / Box
80225	Markal B Paintstiks • Solid Paint Ambient Surface Marker • Combines Long-Lasting Durability of Paint With the Ease-Of-Use of a Crayon • Weather-Resistant • UV-Resistant • Ideal for Layout, Color Coding, Fabrication and Identification Marks Through Oil and Water • Marks on Smooth, Rough, Rusty or Dirty Surfaces	Blue	12 / Box
80226		Green	12 / Box
80227		Pink	12 / Box
80228		Purple	12 / Box
80229		Brown	12 / Box
80230		Gray	12 / Box
82831		Markal F Paintstik • Rough Surface Solid Paint Marker • Ultra High Visibility Fluorescent Colors • Ideal for Layout, Inspection and Color-Coding • Marking Range:-50° - 150° F (-46° - 66° C) • For Marking Metal, Wood, Glass, Plastic, Concrete, Rubber, Cardboard and Paper • Marks Through Oil and Water	Fluorescent Yellow
82832	Fluorescent Red		12 / Box
82834	Fluorescent Orange		12 / Box
82835	Fluorescent Blue		12 / Box
82836	Fluorescent Green		12 / Box
96013	Markal China Marker • Marks on Cardboard, Ceramic, Glass, Metal, Paper, Plastic and Wood		Black
96042	Laco Trades Marker Refills • All Purpose • Marks on Plastic, Glass, Metal, Wood, Cardboard, Rubber and Paper • Weather Resistant — Will Not Rub Off	White	6 / Box
C-96010	China Marker • Marks on Porous and Non-Porous Surfaces	White	12 / Box
PM-20002	Carmel Valve Action Paint Marker	Yellow	1
PM-32303	Carmel Paintstick B	White	12 / Box
SIP	Carmel Ink Pen	Silver	12 / Box
TM-30403	Carmel White Tire Marker	White	12 / Box
TM-30403Y	Carmel Yellow Tire Marker	Yellow	12 / Box



80226



82831



96013



96042



PM-20002



SIP



TM-3040EY

8560-12 — Paintsticks & Crayons — Holders

Code	Description
85000	Markall 5" Standard Holder for B Paintstiks 80220 or 80221
85100	Markall 6" Deluxe Holder With Push Button for B Paintstiks 80220 or 80221
96000	Laco Trades Marker Holder • Tool Required for Housing the 96042 Trades Marker White Refills



85000



85100



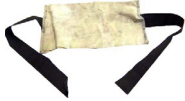
96000

8560-22 — Vent Cord



Code	Description
6-IN	Ply Vent Cord • For Use in Channeling Air From a Wide Variety of Retreading Systems • Use Between Casing and Tread Rubber • Can Also Be Used Between Pre-Cure Tread and Envelope • 6" Roll x 100 Yards.

8560-24 — Wicking



RWICK-8X12



WICK-8X15

Code	Description
RWICK-8X12	8" x 12" Retread Wick Pad With Straps • 24 / Box
WICK-8X12	8" x 12" Retread Stretch Wicking Pads • 4 Ply • For Use With Valve Type Envelopes 24 / Box
WICK-8X15	8" x 15" Retread Stretch Wicking Pads • 4 Ply • For Use With Valve Type Envelopes • 24 / Box
WICK-8X48	8" x 48" Retread Stretch Wicking Pads • 4 Ply • For Use With Valve Type Envelopes • 24 / Box

8560-26 — Staplers & Staples



R-84S5010G



R-98MR1B50-16

Code	Description
R-84S5010G	Rainco 5/16" (8 mm) Long Staples With a 1/2" (6 mm) Crown Width • Galvanized 5010 Fine 20 Gauge Wire • Chisel Point • 5000 / Box
R-98MR1B50-16	Rainco Air Stapler • 50 Series • Lightweight • Bottom Loading With Rear Exhaust • Operating Pressure 60-100 PSI • Handles Staples 6 mm - 16 mm

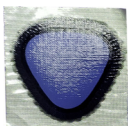
8560-60 — Tire Paint



5656-5

Code	Description	Size
5656-5	Concentrated Water Based Black Tire Paint • Machine or Hand Application • Mix Ratio 1 to 1 • Covers Crayon Marks, Scuffs and Dirt to Give the Tire a Fresh New Look	5 Gallon Bucket (18.79 L)
5656-55		55 Gallon Drum (205 L)

8560-70 — ID Triangles



Code	Description
90B	Sidewall Section Repair Identification Blue Triangle Patches • 1000 / Pack

8570-10 — Outside Envelopes

Robbins Accu-Fit CMT™ (Compression Molding Technology) Envelopes Improve Retread Appearance by Reducing Temperature Variations and Creating a Perfect Vacuum in the Curing Chamber to Help Ensure a Strong Bond of the Tread to the Tire

Code	Description	Size	Bead to Bead	Qty
2910-25	Robbins Outside Envelope With Valve	29" x 10"	25"	2
3117-19	Robbins Outside Envelope With Valve	31" x 17"	19"	2
3211-27	Robbins Outside Envelope With Valve	32" x 11"	27"	2
3213-25	Robbins Outside Envelope With Valve	32" x 13"	25"	2
3218-19	Robbins Outside Envelope With Valve	32" x 18"	19"	2
3511-30	Robbins Outside Envelope With Valve	35" x 11"	30"	2
3513-28	Robbins Outside Envelope With Valve	35" x 13"	28"	2
3515-25	Robbins Outside Envelope With Valve	35" x 15"	25"	2
3812-31	Robbins Outside Envelope With Valve	38" x 12"	31"	2
3814-29	Robbins Outside Envelope With Valve	38" x 14"	29"	2
3816-28	Robbins Outside Envelope With Valve	38" x 16"	28"	2
3820-24	Robbins Outside Envelope With Valve	38" x 20"	24"	2
3822-25	Robbins Outside Envelope With Valve	38" x 22"	25"	2
4023-23	Robbins Outside Envelope With Valve	40" x 23"	23"	2
4213-37	Robbins Outside Envelope With Valve	42" x 13"	37"	2
4214-32	Robbins Outside Envelope With Valve	42" x 14"	32"	2
4215-35	Robbins Outside Envelope With Valve	42" x 15"	35"	2
4217-34	Robbins Outside Envelope With Valve	42" x 17"	34"	2
4219-30	Robbins Outside Envelope With Valve	42" x 19"	30"	2
4221-29	Robbins Outside Envelope With Valve	42" x 21"	29"	2
4223-27	Robbins Outside Envelope With Valve	42" x 23"	27"	2
4224-24	Robbins Outside Envelope With Valve	42" x 24"	24"	2
4413-40	Robbins Outside Envelope With Valve	44" x 13"	40"	2
4415-38	Robbins Outside Envelope With Valve	44" x 15"	38"	2
4416-36	Robbins Outside Envelope With Valve	44" x 16"	36"	2
4417-36	Robbins Outside Envelope With Valve	44" x 17"	36"	2
4419-33	Robbins Outside Envelope With Valve	44" x 19"	33"	2
4422-29	Robbins Outside Envelope With Valve	44" x 22"	29"	2
4522-34	Robbins Outside Envelope With Valve	45" x 22"	34"	2
4814-44	Robbins Outside Envelope With Valve	48" x 14"	44"	2



8570-12 — Inside Envelopes



Code	Description	Size	Qty
2957-16		29" x 7"	1
2957-17-5		29" x 7"	1
2957-19-5		29" x 7"	1
3218-19-5		32" x 8"	1
3508-22-5		35" x 8"	1
3818-22-5	Robbins Inside Envelope • Accu-Fit II Inner-Lope® Envelopes Mold to the Tire Body, Delivering Uniform Curing Pressure and Heat on the Tread and Tire Body, Including the Bead Area, for Maximum Bonding Adhesion and Less Tread Distortion	38" x 8"	1
3818-24-5		38" x 8"	1
4008-22-5		40" x 8"	1
4028-22-5		40" x 8"	1
4028-24-5		40" x 8"	1
40X8-20		40" x 8"	1
4228-24-5		42" x 18"	1
44212-22-5		44" x 12"	1
8.25X15HB	Robbins Inside Envelope • OTR	8.25" x 15"	1

8570-70 — Envelope Lubricants



5612



1-210

Code	Description
5612	Robbins Envelope Lube • Spray on the Inside of the Envelope When the Envelope is Hot and it Will Dry Faster • Spray to Start and Every 30 Cures. • Ready to Use, No Dilution Required • 1 Gallon
5613	Robbins Envelope Lube • Spray on the Inside of the Envelope When the Envelope is Hot and it Will Dry Faster • Spray to Start and Every 30 Cures. • Ready to Use, No Dilution Required • 5 Gallon
1-210	Silicone Mold Lubricant • Concentrated • Mold More Tires, Treads and Retreads in Less Time • Mold Cure Lubricant Helps Rubber Flow Freely for Better Molded Rubber • 1 Gallon
5-210	Silicone Mold Lubricant • Concentrated • Mold More Tires, Treads and Retreads in Less Time • Mold Cure Lubricant Helps Rubber Flow Freely for Better Molded Rubber • 5 Gallon

8570-80 — Envelope Inspection and Repair



833400

Code	Description
833400	B&J Envelope Check Center • Checks Retreading Envelopes for the Smallest Leaks Within Seconds Prior to Inserting Into Curing Chamber (Autoclave) • Tests Within 15-20 Seconds
833405	Check Valve-Pre-Cure Envelope • Use in Conjunction With the B&J 833400 Envelope Check Center

8580-10 — Blades

Code	Description
APOLLO-II	Apollo II Buffing Blade Refills • 28 Blades / Set
EAGLE-II	Eagle II Buffing Blade Refills • 28 Blades / Set
PATRIOT-II	Patriot II Rasp Blades • Made to Fit a 9" Hub • 4 Sections to Round Hub • 28 Blades / Set
PATRIOT-MI	Patriot MI Mulcher Blades • Fit on 11.5" Rasp Hubs • Designed to Rip Rubber From the Tire Creating a Great Percentage of +4 Mulch Material — Material Can be Used for Landscaping Purposes • 5 Sections to Round Hub • 25 Blades / Set
R105-22	R105-22 Buffing Refills • 35 Blades / Bundle.
R115-20	R115-20 Buffing Refills • 25 Blades / Set
R115-25	R115-25 Special Jet Buffing Blade Refills • 25 Blades / Set
R115SB-25	R115-25 Special Jet Buffing Blade Refills • Blade Has 1 Side Oval Hole and 1 Side Figure 8 Hole — Allows Staggering of Blades When Loading Hub • 25 Blades / Set
R4-20	R4-20 Special Jet Buffing Blade Refills • Suitable Replacement Blade for the Italmatic Long Life III • Strongest Tooth Option • 28 Blades / Set
R420-EVO	R4-20 Evo Buffing Blades • Must Order In Multiples of 30 / Case
R4-25	R4-25 Special Jet Buffing Blade Refills • 28 Blades / Set
R-6	Mini Rasps 2" Diameter, 3/8" Arbor Hole • Efficient Way to Remove Large Amounts of Rubber Quickly • 6 / Pack
S-115-20	S-115-20 Special Rocket Jet Buffing Blade Refills • Suitable Replacement Blade for the Italmatic Long Life III • Best Tooth Option • 30 Blades / Set
S-115-25	S-115-25 Special Rocket Buffing Blade Refills • Suitable Replacement Blade for the Italmatic Long Life III • Weakest Tooth Option • 30 Blades / Set



APOLLO-II



EAGLE-II



PATRIOT-II



R115-20



R115-25



R4-20



R4-25



S-115-20



8580-20 — Hubs

Code	Description
12-921	Saturn II All Purpose Hub Complete • 3-3/4" Wide • 1-1/2" Arbor Hole • Use on a Bandag Buffer • Comes Loaded With Apollo II Blades • (8) 3-3/4" x 5/16" Pins, (20) Sat 3/8" Spacers and (4) 3/16" Spacers
12-957	Saturn II All Purpose Hub Complete • 4" Wide • 1-1/2" Arbor Hole • Can be Used on a Bandag 23 Buffer • Comes Loaded With Apollo II Blades • (8) 4" x 5/16" Pins, (28) Sat 3/8" Spacers • No Drive Pin Holes and No Keyways in Arbor Hole



8580-50 — Sharpeners

Code	Description
57-S	57-S Jet Rasp Sharpener



8590-10 — Tire Inspectors



<i>Code</i>	<i>Description</i>
5199210	RHS-300 Rema Tire Spreader • Handles Passenger, Truck, Tractor and Small OTR Tires • Up to 40° Tilt Function With Rollers • Tire Lifting Capacity 660 Lbs • Tires Sizes Up to 62.5" in Diameters • Dimensions 54.3" L x 31.5" W x 59" H

8590-30 — Extruders



S-180



S-182



S-184

<i>Code</i>	<i>Description</i>
S-180	Used For Filling Nail Holes Prior to Retreading • Extruded Soft Rubber Flows Into Every Crevice and Crack of the Hole • Extrudes 11 Lbs Per Hour
S-180GO	6792 Bench Top Extruder • Gun Only
S-182	6790 Mini Nail Hole Extruder • 110V • Self Heating • 1/2 HP Bosch Drive • Variable Heat Control From 32° to 248° F • Extrudes 40 Lbs Per Hour
S-184	6794 OTR Extruder • 110V • Self Heating • 3/4 HP Bosch Drive • Variable Heat Control From 32° to 248° F • Extrudes 66 Lbs Per Hour

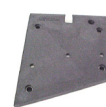
8590-40 — Expandable Hubs



<i>Code</i>	<i>Description</i>
600846	Expandable Rim Assembly Complete From National Hub • 22-24.5 x 9 • Traditional Type — Not Accuband Type
733093	Expandable Rim Assembly Complete From National Hub • 22-24.5 X 8-1/4 • Traditional Type — Not Accuband Type
R600846M	Michelin Expandable Hub Assembly Complete From National Hub • 22-24.5" x 9" Michelin Type • Fittings Are Slightly Larger • 6 Air Hook-Ups
R732774	National Hub 17-20" x 8-1/4" Expandable Hub Assembly
R737514	Expandable Hub Stem Kit • Includes 8 Plain and 4 Locking Stems, Plus 1 Garter Spring

8590-42 — Expandable Hub Accessories & Parts

Code	Description
729617	Plain Stem • Expandable Hub
729618	Locking Stem • Expandable Hub
900512	Garter Spring • Expandable Hub
R702701	Expandable 14-17" Rim Assembly Replacement Belt • Bead Width of Belt is 7-1/8"
R733092	Expandable 20-22.5" Rim Assembly Replacement Belt • Bead Width of Belt is 8-1/4"
R733001	Expandable Hub Spray • 10 oz Can



729617



729618



900512



R733001

8590-60 — Rema Tip Top Thermopress Systems

Code	Description
6575	Thermopress EM II • OTR Vulcanizing Machine for the Repair of Injuries in the Tread, Shoulder and Sidewall of Radial and Bias-Ply Tires on Truck, Agricultural and OTR/EM Tires • Includes (1) Movable Undercarriage, (1) Energy Block, (1) Frame, Slip-on Contour Segments, (3) Pressure Plates, (1) Thermopress Heating Plate #2 and (1) Thermopress Heating Plate # 3
5171525	Thermopress II Economy • Vulcanizing Machine for the Repair of Radial and Cross-Ply Car, Van, Truck, Tractor and EM Tires • Includes (2) 230V Heating Plates, Timer Unit, U-Clamp, Extension for Plate, Rubber Covers for Both Cars and Trucks, and a Heating Plate Cover
5175222	#2 Black Thermopress EM Heating Mat • 10-1/2" x 10-1/2"
5175246	#4 Thermopress EM Heating Mat • 18" x 18"
5175260	#5 Thermopress EM Heating Mat • 29" x 21-1/2"
5175727	Thermopress EM Kit for the Repair of 40-57" Tires • Use With Thermopress EM II
5175961	#5 Thermopress EM Heating Pocket • 31-7/8" x 25-3/8" • Black
5176032	#3 Thermopress EM Heat Plate Complete With Heating Mat and Heating Pocket • Use With Thermopress EM II, EM III • 17" x 17"
5176040	#5 Thermopress EM Heat Plate Complete With Heating Mat and Heating Pocket • Use With Thermopress EM III • 29-1/2" x 21-1/2"
5176276	#4 Thermopress EM Heating Pocket • 21-7/8 x 20-7/8"
5176283	#4 Thermopress EM Pressure Equalizing Pad • 19-1/2" x 17-1/2"



6575



5171525

8590-62 — Clamp Vulcanizing Equipment *cont'd on next page*

Code	Description
S1015	Passenger Tire Vulcanizer • Lightweight and Portable • For Tread Area Nail Holes and Other Punctures • For Tube and Tubeless Tires • 120 V • 1 Curing Head • Size 3-5/16" Round • Throat Depth 4"
S1016	Truck Tire Vulcanizer for Tread, Shoulder and Sidewall Repairs • Up to 12:00 Cross-Section • 120 V • 2 Curing Heads • Size 3-5/16" Round • Throat Depth 6-1/4" • Throat Height 9-1/2"
S1017	Tractor Tire Vulcanizer for Tread, Shoulder and Sidewall Repairs • Up to 13:00 Cross Section • Heat From Both Sides
S1018	Tractor Tire Vulcanizer for Tread, Shoulder and Sidewall Section Repairs • Heat From Both Sides • 3-5/16" Round Heat Unit • Fits Into Close Quarters for Small Repairs — Has Wattage Output to Handle Adaptor Plates for Larger Repairs • Spring Loaded



S1015



S1016






S1017



S1018

8590-62 — Clamp Vulcanizing Equipment *cont'd from previous page*

Code	Description
 S1019	GT2B Giant Tire Vulcanizer • Makes Tread, Shoulder and Sidewall Section • Heat From Both Sides • 4" x 6" Square Heat Units • Works Well for Small Repairs or Giant Tires • Spring Loaded Design
 S1021	
 S1022A	
 S1022A	Passenger / Light Truck Tire Vulcanizer • Air Operated • Repairs Tread, Shoulder and Sidewall • Heat From Both Sides • Piston / Pad Air Head
 S1022A-STD	Stand for LT / MT Spotters
 S1023A	Medium Truck Tire Vulcanizer • Air Operated • Repairs Tread, Shoulder and Sidewall of 8:25 Through 12:00 Truck Tires • Heat From Both Sides • Piston / Pad Air Head
 S1025	
 S1025	Tubeless Truck Tire Bead Spotter • Capable of 7" Spot Repair • Heat From Both Sides • Plates to Repair 22.5 and 24.5 Radial and Bias Ply Tubeless Tires • 110V
 S1028	Air Operated Truck Tire Vulcanizer • For Tread Shoulder and Sidewall Repairs From Low Profile to Super Single • Piston / Pad System • Inside / Outside Heat • Spring-Loaded Mechanical Pressure • Solid Heat Units for Tread and Shoulder Repairs
 S1028-STD	
 S1030	Multi-Use Vulcanizer for Agricultural, Skidder and OTR Tires • Mid-Range Tire Sizes From 20.5" x 25", OTR Sizes Up To 29.5" x 35" and Skidder Tires Up To 30.5" x 32" • Tread, Shoulder and Sidewall Repairs • Air Bag Applies Over 5000 PSI to Repair • 120V
 T003	
T003	200 Tube Plate Vulcanizer • Economical Tube Repair Option • Tube Plate Will Make Better Repairs on Common Size Tubes • Thermostat Reaches Curing Temperature Quickly • Detachable Flat Plate for Vulcanizing Valve Stems • 120V

8590-64 — Clamp Vulcanizing Equipment — Accessories

Code	Description
 V-1002789	GVS 6" x 7" Heat Pad • 110V
V-1002809	GVS 8" x 8" Heat Pad • 110V
V-1002819	GVS 12" x 12" Heat Pad • 110V
V-1002829	GVS 14" x 14" Heat Pad • 110V
V-1002849	GVS 20" x 20" Heat Pad • Round 110V
V-1002859	GVS 8" x 8" Air Bag
V-1002869	GVS 12" x 12" Air Bag
V-1002889	GVS 14" x 14" Air Bag
V-1002919	GVS 20" x 20" Air Bag • Round • Air Valve is Approximately 6-1/2" From Centre of Air Bag
V-1002929	GVS 6" x 7" Air Bag
V-1002969	Vulcan GVS Basic Clamp 110V
V-259792	Inside Heat Pad 23" x 33" 220V • Known as Vulcamatic-C • Works on Both the Vulcan SM-250 System and the Vulcan MV-30 System

8590-70 — Flexible Vulcanizing Systems — Control Panels

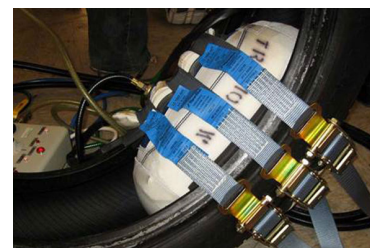
Code	Description
M100	Monaflex OTR Control Panel
MVN100	Monaflex Control Panel Without Timer
MVS9000-508	Monaflex Ceramic Fuse • 10 Amp
TRRS	Monaflex Control Panel With Timer • Neon Temperature Display With Digital Timer • 220V
VVVTCP	Valcatouch OTR Control Panel • 220V



M100

8590-72 — Flexible Vulcanizing Systems — Straps

Code	Description
M45/6	Monaflex OTR Harness Assembly • HG2, HG3 and 6 Standard OTR Straps
M45/6/7	Monaflex XL OTR Harness Assembly • HG2, HG3 and 6 XL OTR Straps
M4832E	Monaflex External Curing Pack • 48" x 32"
TROC3	Monaflex Set of 3 TROC Straps • Use With TR219E
TROC4	Monaflex Set of 4 TROC Straps • Use With TR2213E
TROC5XL	Monaflex Set of 6 TROC XL Straps • Use With TR2621E
VV2621HGB	26" x 21" Harness Guide Bag
VV4832HGB	48" x 32" Harness Guide Bag
VVH512	XL OTR 6 Strap Set x 24'
VVH624	Standard OTR 5 Strap Set x 12'



8590-74 — Flexible Vulcanizing Systems — Air Bags *cont'd on next page*

Code	Description
M1518-24W	Monaflex Cylinder Air Bag • 18" x 24"
M1518-24W-OC	Monaflex M1518-24W Outer Cover Only
M1721/24W-IC	Monaflex M1721-24W Inner Cover Only
M1721-24W	Monaflex Cylinder Air Bag • 17" x 21"
M1721-24W-OC	Monaflex M1721-24W Outer Cover Only
M1820	Monaflex Air Bag • 18" x 20"
M2424	Monaflex Air Bag • 24" x 24"
M2732/32B	Monaflex M2732/32B Bladder Only
M2732/32W	Monaflex Cylinder Air Bag • 27" x 32"
M2732/32W-OC	Monaflex M2732/32W Outer Cover Only
M2828	Monaflex Air Bag • 28" x 28"
M3336/32W	Monaflex Cylinder Air Bag • 33" x 36"
M3536	Monaflex Cylinder Air Bag • 35" x 36"
M3541	Monaflex Cylinder Mandrel Bag



M1721-24W



M4824W

8590-74 — Flexible Vulcanizing Systems — Air Bags *cont'd from previous page*

M1721-24W



M4824W



MONAFLEX OTR SYSTEM

Code	Description
M3624	Monaflex Flat Air Bag • 36" x 24"
M3638	Monaflex Air Bag • 36" x 38"
M3842/32W	Monaflex Tractor Cylinder Air Bag • 38" x 42"
M4447/32W	Monaflex Tractor Cylinder Air Bag • 44" x 47"
M4824	Monaflex Flat Air Bag • No Window • Ships With (1) M4824-OC and (2) M4824-IC Inner Covers • 48" x 24"
M4824-IC	Monaflex M4824 Inner Cover Only
M4824-OC	Monaflex M4824 Outer Cover Only
M4824W	Monaflex Flat Window Air Bag • Ships With (1) M4824W-OC and (2) M4824W-IC Inner Covers • 48" x 24"
M4824W-B	Monaflex M4824W Bladder Only
M4824W-IC	Monaflex M4824W Inner Cover Only
M4824W-OC	Monaflex M4824W Outer Cover Only
M5432W	Monaflex Flat Air Bag • 54" x 32"
M6032	Monaflex Flat Air Bag • 60" x 32"
M6732W	Monaflex Inside Flat Window Air Bag • 67" x 32"
M7232	Monaflex Flat Air Bag • 72" x 32"
M7532W	Monaflex Flat Air Bag • 75" x 32"
M9032W	Monaflex Flat Air Bag • 90" x 32"
MVS5001/101	Monaflex Blue Airline Assembly
MVS5001/200	Monaflex Airbag Hose • Screw Over
MVS5001/207	Monaflex Blue Air Bag Hose • Screw Over
MVS5001/208	Monaflex Green Air Bag Hose • Screw Over
MVS5001/209	Monaflex Black Air Bag Hose • Screw Over
MVS9001-100	Monaflex Cylinder Air Bag Gauge • 0 - 60
TR1315-20W	Tractor Cylinder Air Bag • 13" x 15"
TR1315-20W-IC	TR1315-20W Inner Cover Only
TR1315-20W-OC	TR1315-20W Outer Cover Only
TR219E	External Cure Pack
TR2213E	External Cure Pack • 22 "x 13"
TR2621E	Monaflex External Cure Pack • 26" x 21"
TR2621E-ES	TR2621E External Sleeve Only • This is the Outer Cover Sleeve That Has Hoops for the Belts to Go Through • A Common Wear Item
TR2621E-IC	TR2621E Inner Cover Only
TR2621-OC	TR2621A Outer Cover Only
TR910-11W	Cylinder Air Bag With Window
TR911-13W	Cylinder Air Bag With Window
VV1721/24CAB	Monaflex Tractor Cylinder Air Bag • 17" x 21"
VV-2621HGB	Monaflex Flat Air Bag • 26" x 21"
VV4824FAB	Flat Air Bag • 48 "x 24"
VV-4824FAB	Monaflex Flat Air Bag • 48 "x 24"
VV9032FAB	Flat Air Bag • 90" x 32"

8590-76 — Flexible Vulcanizing Systems — Head Pads

<i>Code</i>	<i>Description</i>
M2519H	Monaflex OTR Heat Pad • 25" x 19"
M2621H	Monaflex OTR Heat Pad • 26" x 21" • 220V
M2626H	Monaflex OTR Heat Pad • 26" x 26"
M3015H	Monaflex OTR Heat Pad • 30" x 15"
M3132H	Monaflex OTR Heat Pad • 31" x 32"
M4220H	Monaflex OTR Heat Pad • 42" x 20"
M4824H	Monaflex OTR Heat Pad • 48" x 24"
M5224H	Monaflex OTR Heat Pad • 52" x 24"
MVN1213H	Monaflex Heat Pad • 18" x 13" • 220V
MVN2217H	Monaflex Heat Pad • 22" x 17" • 220V
MVS9000-900	Mono Heat Pad Wires With Ends • Complete Mains and Thermo Cable With Fittings and Shrouding
TR219H-220V	Monaflex OTR Heat Pad 219H • 220V
TR2210H	Monaflex OTR Heat Pad • 22" x 10" • 220V
TR2213H	Monaflex OTR Heat Pad • 22" x 13" • 220V
TR2621H	Monaflex Heat Pad • 26" x 21" • 220V
VV210LS	Thermocouple Heat Pad • 220V
VV-2215H	Monaflex Outside Heat Pad • 22" x 15"
VV2621H	Monaflex OTR Heat Pad • 26" x 21" • 220V
VV2626H	Thermocouple Heat Pad • 220V
VV-2815H	Monaflex inside Heat Pad • 28" x 15"
VV3015H	Thermocouple Heat Pad • 220V
VV3132H	Thermocouple Heat Pad • 220V
VV4824H	Thermocouple Heat Pad • 220V



M2519H

8590-78 — Flexible Vulcanizing Systems — Accessories

<i>Code</i>	<i>Description</i>
HPRK-L	Monaflex Thermocoupler Repair Kit
VVPFK	Pipe Filler Kit



HPRK-L

8590-80 — GVS Vulcanizing Equipment Parts

<i>Code</i>	<i>Description</i>
GVS-REP	GVS System Repair • Heat Pad / Air Bag
V-102979	Vulcan 14" Plate Set Complete
V-102989	Vulcan 20" Round Plate Set

Part # — Page	Part # — Page	Part # — Page	Part # — Page
1-210 — 85-20	3515-25 — 85-19	5570 — 85-2	M1820 — 85-25
100-GEG-20080 — 85-14	3812-31 — 85-19	5571 — 85-2	M2424 — 85-25
100-GEG-200 — 85-14	3814-29 — 85-19	5612 — 85-20	M2519H — 85-27
11-603 — 85-8	3816-28 — 85-19	5613 — 85-20	M2621H — 85-27
11-604 — 85-8	3818-22-5 — 85-20	5656-55 — 85-18	M2626H — 85-27
11-605 — 85-8	3818-24-5 — 85-20	5656-5 — 85-18	M2732/32B — 85-25
11-606 — 85-8	3820-24 — 85-19	57-S — 85-21	M2732/32W-OC — 85-25
11-607 — 85-8	3822-25 — 85-19	6-IN — 85-18	M2732/32W — 85-25
11-610 — 85-8	4008-22-5 — 85-20	600846 — 85-22	M2828 — 85-25
11-612 — 85-8	4023-23 — 85-19	6017 — 85-16	M3015H — 85-27
11-626 — 85-8	4028-22-5 — 85-20	6018 — 85-16	M3132H — 85-27
11-635 — 85-8	4028-24-5 — 85-20	6055 — 85-15	M3336/32W — 85-25
11-636 — 85-8	405 — 85-6	6056 — 85-15	M3536 — 85-25
12-921 — 85-21	40X8-20 — 85-20	655-143 — 85-6	M3541 — 85-25
12-957 — 85-21	4213-37 — 85-19	6575 — 85-23	M3624 — 85-26
12SB — 85-5	4214-32 — 85-19	729617 — 85-23	M3638 — 85-26
132032-16 — 85-10	4215-35 — 85-19	729618 — 85-23	M3842/32W — 85-26
132032-36 — 85-10	4217-34 — 85-19	733093 — 85-22	M4220H — 85-27
1518116UG — 85-2	4219-30 — 85-19	8.25X15HB — 85-20	M4447/32W — 85-26
1518132CG — 85-2	4221-29 — 85-19	80222 — 85-17	M45/6/7 — 85-25
1518164CG — 85-2	4223-27 — 85-19	80224 — 85-17	M45/6 — 85-25
151818CG — 85-2	4224-24 — 85-19	80225 — 85-17	M4824-IC — 85-26
151818FG — 85-2	4228-24-5 — 85-20	80226 — 85-17	M4824-OC — 85-26
151818UG — 85-2	432000-170 — 85-12	80227 — 85-17	M4824H — 85-27
152116S — 85-2	432001-170 — 85-12	80228 — 85-17	M4824W-B — 85-26
15618CG — 85-2	432003-230 — 85-12	80229 — 85-17	M4824W-IC — 85-26
15NY29364 — 85-3	432007-170 — 85-12	80230 — 85-17	M4824W-OC — 85-26
16-RBB1G — 85-5	432014-170 — 85-12	82831 — 85-17	M4824W — 85-26
16-RBB5G — 85-5	432014-230 — 85-13	82832 — 85-17	M4824 — 85-26
16-RBS5G — 85-5	432015-390 — 85-13	82834 — 85-17	M4832E — 85-25
18-ER — 85-3	432063-230 — 85-13	82835 — 85-17	M5224H — 85-27
18-OTR-RR — 85-3	432065-230 — 85-12	82836 — 85-17	M5432W — 85-26
18-TRR — 85-3	432111-230 — 85-14	833400 — 85-20	M6032 — 85-26
2-280 — 85-15	4413-40 — 85-19	833405 — 85-20	M6732W — 85-26
2-S871 — 85-15	4415-38 — 85-19	85000 — 85-17	M7232 — 85-26
2-S872B — 85-15	4416-36 — 85-19	85100 — 85-17	M7532W — 85-26
2-S872S — 85-15	4417-36 — 85-19	900512 — 85-23	M9032W — 85-26
2-S872 — 85-15	4419-33 — 85-19	90B — 85-18	MH26000 — 85-16
2-S873B — 85-15	44212-22-5 — 85-20	932004-330 — 85-14	MH26470 — 85-16
2-S873 — 85-15	4422-29 — 85-19	932005-330 — 85-14	MK41580 — 85-16
2-S875 — 85-16	4522-34 — 85-19	932063-230 — 85-12	MK42810 — 85-16
2-S879B — 85-16	4814-44 — 85-19	932088-390 — 85-14	MK42820 — 85-16
2-S879 — 85-16	49-084-074 — 85-6	940 — 85-16	MTR-F — 85-5
20-103 — 85-8	49-2 — 85-6	941 — 85-16	MVN100 — 85-25
20-104 — 85-8	49-3 — 85-6	942 — 85-16	MVN1213H — 85-27
21-101-36 — 85-9	49-4 — 85-6	96000 — 85-17	MVN2217H — 85-27
21-105-36 — 85-9	49-5 — 85-6	96013 — 85-17	MVS5001/101 — 85-26
21-106-16 — 85-9	5-210 — 85-20	96042 — 85-17	MVS5001/200 — 85-26
21-107-36 — 85-9	50F — 85-4	968B — 85-5	MVS5001/207 — 85-26
21-108-16 — 85-10	5159430 — 85-5	968 — 85-5	MVS5001/208 — 85-26
21-109-36 — 85-10	5160970 — 85-3	APOLLO-II — 85-21	MVS5001/209 — 85-26
21-110-60 — 85-10	5161180 — 85-3	C-10 — 85-7	MVS9000-508 — 85-25
283 — 85-15	5161190 — 85-2	C-2 — 85-7	MVS9000-900 — 85-27
284 — 85-15	5171525 — 85-23	C-30 — 85-7	MVS9001-100 — 85-26
2910-25 — 85-19	5175222 — 85-23	C-96010 — 85-17	PAB-F — 85-4
2957-16 — 85-20	5175246 — 85-23	DEX-75310 — 85-16	PATRIOT-II — 85-21
2957-17-5 — 85-20	5175260 — 85-23	DH73040 — 85-16	PATRIOT-MI — 85-21
2957-19-5 — 85-20	5175727 — 85-23	DH73110 — 85-16	PM-20002 — 85-17
305-R — 85-6	5175961 — 85-23	DM90010 — 85-16	PM-32303 — 85-17
3117-19 — 85-19	5176032 — 85-23	DM90050 — 85-16	R-6 — 85-21
3211-27 — 85-19	5176040 — 85-23	DSK-458-24 — 85-11	R-84S5010G — 85-18
3213-25 — 85-19	5176276 — 85-23	DSK-738-16 — 85-11	R-98MR1B50-16 — 85-18
3218-19-5 — 85-20	5176283 — 85-23	DSK-738-24 — 85-11	R105-22 — 85-21
3218-19 — 85-19	5177300 — 85-4	EAGLE-II — 85-21	R115-20 — 85-21
332001-16 — 85-12	5177310 — 85-4	GVS-REP — 85-27	R115-25 — 85-21
332009-16 — 85-10	5177323 — 85-4	HPRK-L — 85-27	R115SB-25 — 85-21
332009-36 — 85-10	5177330 — 85-4	K-10 — 85-7	R4-20 — 85-21
332009-60 — 85-10	5177402 — 85-4	K-24A — 85-16	R4-25 — 85-21
332015-60 — 85-12	5179008 — 85-4	K-2 — 85-7	R420-EVO — 85-21
332056-16 — 85-9	5179015 — 85-4	K-30 — 85-7	R600846M — 85-22
332056-36 — 85-9	5199210 — 85-22	K-533 — 85-5	R702701 — 85-23
332058-16 — 85-9	51F — 85-4	K-534 — 85-5	R732774 — 85-22
332063-16 — 85-9	550MP-3/4 — 85-6	K-535 — 85-5	R733001 — 85-23
332064-16 — 85-9	550MP-5/8 — 85-6	K-632 — 85-5	R733092 — 85-23
3400-1/2 — 85-6	551-091400 — 85-6	M100 — 85-25	R737514 — 85-22
3400-5/8 — 85-6	551-765322 — 85-6	M1518-24W-OC — 85-25	RH100 — 85-13
3500 — 85-6	551 — 85-6	M1518-24W — 85-25	RH102 — 85-13
3508-22-5 — 85-20	5561 — 85-2	M1721-24W-OC — 85-25	RH106-S — 85-13
3511-30 — 85-19	5563 — 85-2	M1721-24W — 85-25	RH107 — 85-13
3513-28 — 85-19	5567-26.5 — 85-3	M1721/24W-IC — 85-25	RH108-S — 85-13

Part # — Page

Part # — Page

Part # — Page

Part # — Page

RH109 — 85-13
 RH110-S — 85-13
 RH111 — 85-13
 RH112 — 85-13
 RH114-S — 85-13
 RH114X — 85-11
 RH114 — 85-13
 RH116-S — 85-13
 RH1160 — 85-14
 RH116X — 85-11
 RH116 — 85-13
 RH118-S — 85-13
 RH118 — 85-13
 RH120-S — 85-13
 RH120X — 85-11
 RH120 — 85-13
 RH122-S-460 — 85-13
 RH122-S — 85-13
 RH122X — 85-11
 RH122 — 85-13
 RH130-170 — 85-13
 RH130-230 — 85-13
 RH130 — 85-13
 RH140 — 85-13
 RH150 — 85-12
 RH151 — 85-12
 RH152 — 85-12
 RH154 — 85-12
 RH156 — 85-12
 RH300 — 85-12
 RH308 — 85-12
 RH310 — 85-12
 RH601 — 85-14
 RH603 — 85-14
 RH605 — 85-14
 RH611 — 85-14
 RH613 — 85-14
 RH619 — 85-12
 RH626 — 85-14
 RH635 — 85-14
 RH708 — 85-13
 RUSX10X1-1/4S — 85-16
 RWICK-8X12 — 85-18
 S-115-20 — 85-21
 S-115-25 — 85-21
 S-180GO — 85-22
 S-180 — 85-22
 S-182 — 85-22
 S-184 — 85-22
 S1011 — 85-12
 S1015 — 85-23
 S1016 — 85-23
 S1017 — 85-23
 S1018 — 85-23
 S1019 — 85-24

S1021 — 85-24
 S1022A-STD — 85-24
 S1022A — 85-24
 S1023A — 85-24
 S1025 — 85-24
 S1028-STD — 85-24
 S1028 — 85-24
 S1030 — 85-24
 S1046D — 85-7
 S1047XL — 85-7
 S1047 — 85-7
 S1048 — 85-7
 S1049 — 85-7
 S2032 — 85-12
 S870 — 85-15
 S871 — 85-15
 S872 — 85-15
 S873 — 85-15
 S874 — 85-15
 S875 — 85-16
 S879 — 85-16
 S896 — 85-15
 SIP — 85-17
 SLP-9201 — 85-7
 SLP-9202 — 85-7
 SLP-9211 — 85-7
 SLP-9212 — 85-7
 SS10 — 85-16
 T003 — 85-24
 TA-2100-16 — 85-11
 TA-2200-16 — 85-11
 TA-2200-36 — 85-11
 TA-2203-36 — 85-9
 TA-2203M-36 — 85-9
 TA-2204-16 — 85-9
 TA-2204M-16 — 85-9
 TA-2205-36 — 85-9
 TA-2205M-36 — 85-9
 TA-2206-16 — 85-9
 TA-2207-36 — 85-9
 TA-2207M-36 — 85-9
 TA-2208-16 — 85-9
 TA-2209-36 — 85-9
 TA-2210-16 — 85-9
 TA-2502-16 — 85-11
 TA-2505-36 — 85-11
 TA-2506-16 — 85-11
 TA-2507-36 — 85-11
 TA-2508-16 — 85-11
 TA-2611-36 — 85-11
 TA-2612-16 — 85-11
 TA-2613-36 — 85-11
 TA-2614-16 — 85-11
 TA-P208-16 — 85-9
 TA-T350-16 — 85-9

TA-T418-16 — 85-9
 TA-T418-36 — 85-9
 TA-T438-16 — 85-9
 TA-T450-16 — 85-9
 TA-T475-16 — 85-9
 TA-T650-16 — 85-9
 TBYD03 — 85-8
 TBYH11 — 85-8
 TBYH12 — 85-8
 TBYOX2R — 85-8
 TBYOX3R — 85-8
 TCW-210-16 — 85-10
 TCW-210-36 — 85-10
 TCW-210-40 — 85-10
 TCW-210-60 — 85-10
 TCW-310-16 — 85-10
 TCW-310-36 — 85-10
 TCW-315-16 — 85-10
 TCW-315-36 — 85-10
 TCW-315-60 — 85-10
 TCW-415-16 — 85-10
 TCW-415-36 — 85-10
 TCW-415-60 — 85-10
 TCW-515-16 — 85-10
 TCW-515-36 — 85-10
 TCW-615-16 — 85-10
 TCW-615-36 — 85-10
 TCW-815-16 — 85-10
 TDW-310-16 — 85-10
 TDW-410-16 — 85-10
 TDW-410-36 — 85-10
 TDW-410-60 — 85-10
 TDW-510-16 — 85-10
 TDW-510-36 — 85-10
 TDW-515-24 — 85-10
 TDW-610-16 — 85-10
 TDW-610-36 — 85-10
 TFW-310-60 — 85-9
 TFW-415-16 — 85-9
 TFW-415-60 — 85-9
 TFW-610-36 — 85-9
 TFW-615-16 — 85-9
 TM-30403Y — 85-17
 TM-30403 — 85-17
 TR1315-20W-IC — 85-26
 TR1315-20W-OC — 85-26
 TR1315-20W — 85-26
 TR219E — 85-26
 TR219H-220V — 85-27
 TR2210H — 85-27
 TR2213E — 85-26
 TR2213H — 85-27
 TR2621-OC — 85-26
 TR2621E-ES — 85-26
 TR2621E-IC — 85-26

TR2621E — 85-26
 TR2621H — 85-27
 TR910-11W — 85-26
 TR911-13W — 85-26
 TROC3 — 85-25
 TROC4 — 85-25
 TROC5XL — 85-25
 TRRS — 85-25
 UG-1250-72M — 85-6
 UG-1250L-72M — 85-6
 UG-65EBL — 85-6
 UG-65EB — 85-6
 V-1002789 — 85-24
 V-1002809 — 85-24
 V-1002819 — 85-24
 V-1002829 — 85-24
 V-1002849 — 85-24
 V-1002859 — 85-24
 V-1002869 — 85-24
 V-1002889 — 85-24
 V-1002919 — 85-24
 V-1002929 — 85-24
 V-1002969 — 85-24
 V-102979 — 85-27
 V-102989 — 85-27
 V-259792 — 85-24
 VV-1004502 — 85-16
 VV-2215H — 85-27
 VV-2621HGB — 85-26
 VV-2815H — 85-27
 VV-4824FAB — 85-26
 VV1721/24CAB — 85-26
 VV210LS — 85-27
 VV2621HGB — 85-25
 VV2621H — 85-27
 VV2626H — 85-27
 VV3015H — 85-27
 VV3132H — 85-27
 VV4824FAB — 85-26
 VV4824H — 85-27
 VV4832HGB — 85-25
 VV9032FAB — 85-26
 VVH512 — 85-25
 VVH624 — 85-25
 VVPFK — 85-27
 VVVTCP — 85-25
 WICK-8X12 — 85-18
 WICK-8X15 — 85-18
 WICK-8X48 — 85-18

C**Cushion Gums & Rope Rubbers**

- Chemical Cushion Gum: 85-2
- Cushion Gum: 85-2
- Repair Cord: 85-3
- Rope Rubber: 85-3
- Self Curing Rubber Systems: 85-4
 - A & B Compound Repair Systems: 85-4
 - T2 Compound Repair Systems: 85-4

Cutting & Grinding Tools

- Adaptors For Grinders & Buffers: 85-7
- Air Buffers — Heavy Duty: 85-6
- Aluminum Oxide Stones: 85-15, 85-16
- Carbide Burrs: 85-15
- Contour Rubber Grinding Wheels: 85-11, 85-12
- Flex Shaft Buffers, Accessories & Parts: 85-6, 85-7
- Gougers: 85-8
- Knives & Scissors: 85-16
- Knive Brushes: 85-15
- Squiggly Grinding Wheels: 85-8
- SSG Rubber Grinding Balls: 85-14
- SSG Rubber Grinding Cups: 85-12, 85-13
- SSG Rubber Grinding Discs: 85-14
- SSG Rubber Grinding Donuts: 85-13
- SSG Rubber Grinding Kits: 85-14
- SSG Rubber Grinding Pencils: 85-14
- SSG Rubber Grinding Wheels: 85-12
- Tack Rasps: 85-8
- Tungsten Rubber Grinding Balls: 85-11
- Tungsten Rubber Grinding Cones: 85-11
- Tungsten Rubber Grinding Cups: 85-10
- Tungsten Rubber Grinding Discs: 85-11
- Tungsten Rubber Grinding Donuts: 85-10
- Tungsten Rubber Grinding Pencils: 85-11
- Tungsten Rubber Grinding Wheels: 85-9

E**Envelopes & Accessories**

- Envelope Inspection and Repair: 85-20
- Envelope Lubricants: 85-20
- Inside Envelopes: 85-20
- Outside Envelopes: 85-19

R**Retread Blades & Accessories**

- Blades: 85-21
- Hubs: 85-21
- Sharpeners: 85-21

Retread Inspection, Building & Finishing Supplies

- ID Triangles: 85-18
- Paintsticks & Crayons: 85-17
- Paintsticks & Crayons — Holders: 85-17
- Staplers & Staples: 85-18
- Tire Paint: 85-18
- Vent Cord: 85-18
- Wicking: 85-18

V**Vulcanizing Chemicals & Accessories**

- Cans & Brushes: 85-5
- Cements: 85-5

Vulcanizing Equipment

- Clamp Vulcanizing Equipment: 85-23, 85-24
- Clamp Vulcanizing Equipment — Accessories: 85-24
- Expandable Hub Accessories: 85-23
- Expandable Hubs: 85-22
- Extruders: 85-22
- Flexible Vulcanizing Systems — Accessories: 85-27
- Flexible Vulcanizing Systems — Air Bags: 85-25, 85-26
- Flexible Vulcanizing Systems — Control Panels: 85-25
- Flexible Vulcanizing Systems — Head Pads: 85-27
- Flexible Vulcanizing Systems — Straps: 85-25
- GVS Vulcanizing Equipment Parts: 85-27
- Rema Tip Top Thermopress System: 85-23
- Tire Inspectors: 85-22



DID YOU KNOW PREMA CARRIES A FULL LINE OF TIRE REPAIR EQUIPMENT AND SUPPLIES AND IS IN YOUR AREA?

An extensive line of brand name products, all competitively priced.

Tire Repair Materials & Chemicals

Radial Repairs
Bias Repairs
Agriculture Repairs
OTR Repairs
Tube Stems
Universal Repairs
Combi Patch/Plugs
Pre-Buff Cleaners
Vulcanizing Cements
Over-Buff Sealers
Bead Sealers

Lifting Tools

Bottle Jacks
Hydraulic Rams
Lift Pads
Floor Jacks
Jack Stands
Forklift Jacks
Garage Jacks
Bladder Jacks

Service Chemicals

Mounting Compound
Murphy's Liquid Lubricants
Brake Cleaner
Penetrants
Universal Paste
SKID
Silicone Sprays
Tire Sealant
Tire Paint
Tire Shine
Winter Lubricants

Shop Supplies & Equipment

Hand Cleaner
Tire Bags
Dunk Tanks
Work Gloves
Nitrile Gloves
Seat Gloves
Seat Covers
Tire Carts
Floor Mats

Tire Repair Tools

Brushes
Adaptors
Reamers
Probe Tools
Scrapers
Carbide Cutters
Insert Tools
Buffing Stones
Tire Spreaders

Wheel Weights & Balancing Beads

Passenger Weights
Truck Weights
3M Balancing System
Coloured Weights
Zinc Weights
Steel Weights
Magnum Balancing Beads
Counteract Balancing Beads

Wheel Balancing Tools

Adhesive Wheel Weight Remover
Wheel Weight Hammers
Haweka Flange Plates
Duo Collets
Haweka Quick Plates
Haweka Quick Nuts
Replacement Shafts
Cones

Air Tools & Accessories

IR Impact Wrenches
IR Replacement Parts
CP Impact Wrenches
CP Replacement Parts
Tool Covers
Sockets
Ratchets
3M Abrasives
Grinders
Buffers
Needle Scalers

Valves

Passenger
Truck
OTR
Air Liquid
Super Large Bore
Straight or Bent Caps & Cores
Brass or Nickel Alcoa Valves
Enki Valves
4-Way Tools
Fishing Tools
Double Seal Caps
Installation Tools
Grommets
O-Rings

Wheel Service Tools & Equipment

Bead Breakers
Torque Wrenches
Bead Blasters and Bazookas
Hydraulic Pumps
Fasteners (Nuts, Studs & Clamps)
Tire Irons & Bead Hammers
Calcium Pumps
Wheel Guards
Mount/Demount Tools
Hydraulic Rams

Gauges & Air Controls

Pencil Gauges
Master Gauges
Truck Gauges
Inflation Gauges
Calibratable Gauges
Digital Gauges
Al Liquid
Chucks
Nipples
Couplers
Bushings
Crimpers
Hoses
Ferrules
Manifolds
Whip Hoses

TPMS

EZ-Sensor
Redi-Sensor
OE Replacement
Sensors
Replacement Valves
Scan Tools (w/OBD)
Service Kits
Torque Wrenches
T-10 & T-20 Screw
Drivers
Core Tools

Retread

Envelopes
Rasps
Grinding Stones
Carbide Cutters
Hub Lube
Mold Release
Rope Rubber
Sprayers
Blades
Cement
Cushion Rubber
Poly Film
Wicking Pads
Staples

Section Repair

Vulcanizers
Cushion Rubber
Cup Cutters
Carbide Cutters
Tire Stands
HD Skivers
Hand Tools
Flex Shaft Buffers
Rope Rubber
Rasps
Grinding Stones

Miscellaneous

Tire Studs
Stud Guns
Jaw Covers
Duckheads
Plastic Inserts
Brake Lathe Bits
O-Rings
Arctic O-Rings

Your Authorized Distributor

Prema Canada

3230 Mainway - Unit 3, Burlington, ON L7M 1A5
Toll Free: 1.800.268.6311
Phone: 905.628.2303
Fax: 905.628.3646
Inquires: sales@premacanada.ca
www.premacanada.ca

Distributor contact information also available at www.premacanada.ca.